

2020 — 2021

BACHELOR IN

# Philosophy, Politics, Law and Economics

Shape the future of societies  
and organizations

|                |                    |
|----------------|--------------------|
| Type of Degree | Undergraduate      |
| Language       | English            |
| Format         | Full-time          |
| Location       | Segovia and Madrid |
| Duration       | 4 years            |
| Start / Date   | September          |



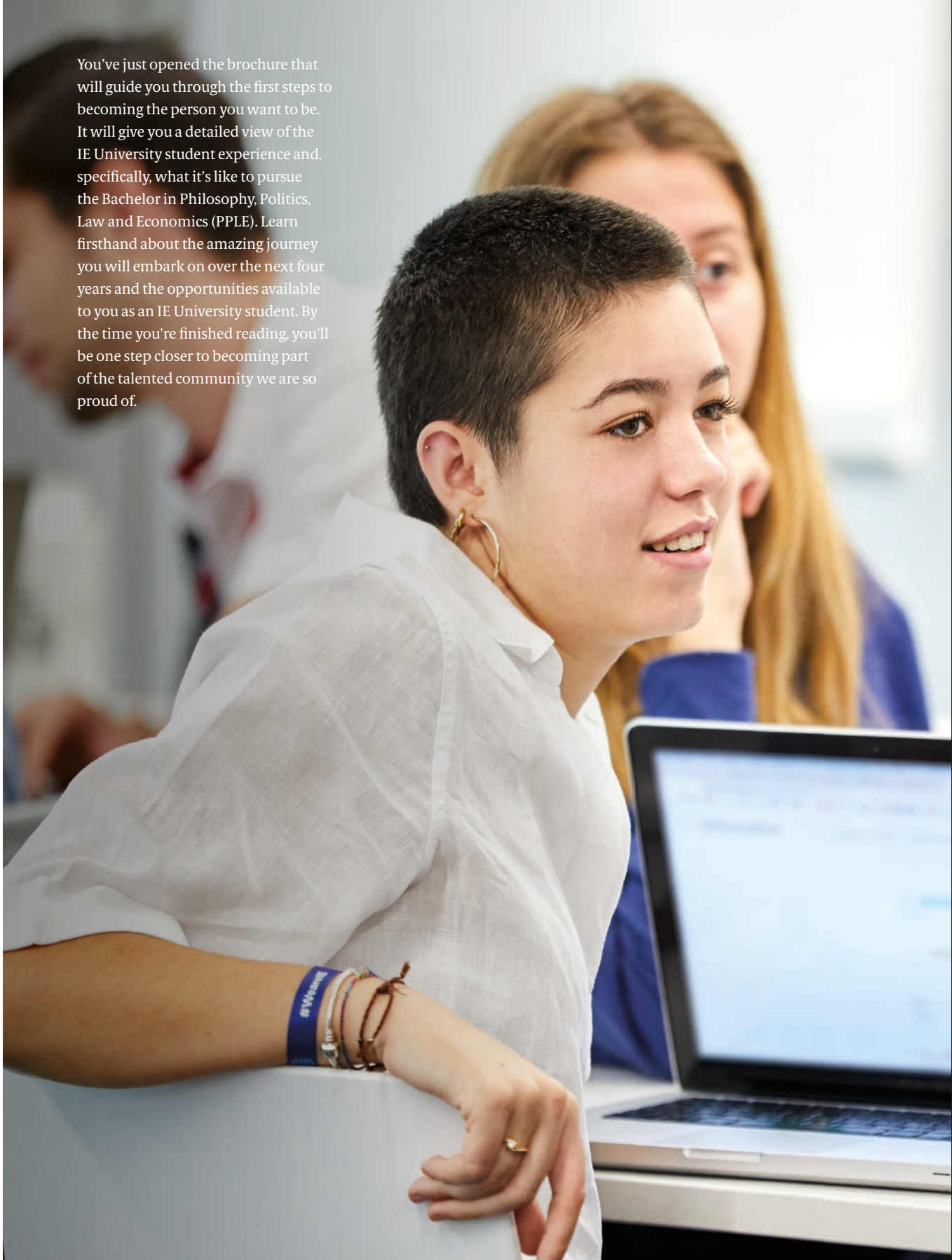
A detailed close-up photograph of a mechanical watch movement. The image shows several interlocking gears, including a large brass gear with a star-shaped center and smaller silver-toned gears. The components are set against a dark, textured background, likely the watch case. The lighting highlights the metallic surfaces and the precision of the engineering.

The Bachelor in Philosophy, Politics, Law and Economics (PPLE) is an applied and multidisciplinary degree for those wanting to learn about the system dynamics underpinning how the world works. By integrating knowledge and hands-on practice in politics, law and economics, students develop a deep understanding of the dynamics that rule the relations between these three fields, empowering them to become agents of change and have a meaningful impact in a globalized world. Conceived from a joint effort of the IE Law School and IE Business School, this innovative degree prepares a new generation of analytical and strategic professionals who will shape the future of governments, societies, and organizations globally.



VIEW THE  
INTERACTIVE  
BROCHURE





You've just opened the brochure that will guide you through the first steps to becoming the person you want to be. It will give you a detailed view of the IE University student experience and, specifically, what it's like to pursue the Bachelor in Philosophy, Politics, Law and Economics (PPLE). Learn firsthand about the amazing journey you will embark on over the next four years and the opportunities available to you as an IE University student. By the time you're finished reading, you'll be one step closer to becoming part of the talented community we are so proud of.

YOU'VE GOT A MESSAGE!

## DEAR STUDENT,

Welcome to the Bachelor in Philosophy, Politics, Law and Economics!

Soon you will be starting an exciting stage of your life, a stage full of opportunities and challenges both in a personal and professional aspect. While studying at IE University, you will broaden your horizons by surrounding yourself with people from all over the world and encountering new perspectives and outlooks. You will meet new people and gain the necessary experience to succeed in a demanding market upon graduation.

This cutting-edge bachelor prepares future leaders with a deep understanding of global political and economic transformations, as well as the legal frameworks and contexts in which such changes take place. Through philosophy, you will be able to gain a deeper perspective of reality and think critically, logically, and ethically when considering the real-world societal implications of ideological approaches. You will gain strategic and analytical thinking skills and the knowledge required to discover potential solutions for important contemporary social problems.

Over the next four years, you will have the chance to participate in labs, clubs and advanced seminars along with students from other degrees. You will also have the opportunity to study abroad and do internships. In short, you will be given many opportunities within an exciting, international, and diverse environment. Make sure that you take full advantage of these experiences and make the most of your university life.

We are here to help you make things happen and become the professional you want to be. Feel free to come to us whenever you need to.

Looking forward to meeting you soon.

**Soledad Atienza**

Vice Dean of International Relations IE Law School



# IE Law School

IE Law School is a vibrant community of professors, professionals, and students from all over the world, brought together by the conviction that the field of law is a starting point to understanding and improving our complex and interconnected world. Over the past 40 years, IE Law School has established itself as a national and international leader in training law professionals with a global focus, thanks to the combination of an excellent faculty, unique programs based on the case method, and active research centers. Our mission is to train talented lawyers who can excel in an extremely globalized and ever-changing world.

## RECOGNITION

According to the list published annually by the Financial Times, IE Law School's LLM programs are some of the best legal training programs in the world. Additionally, IE is recognized by the four main accrediting agencies and associations in the legal and business training world.

## PROGRAMS

IE Law School offers different legal programs, both graduate and undergraduate, adapted to the profile of each student and taking into account their professional objectives. There are programs in English and Spanish, all taught with a global perspective to international students.

## OTHER BACHELORS

### WITHIN IE LAW SCHOOL:

#### **Bachelor of Laws**

If you want to practice law in an international setting and work in top law firms, major corporations, and organizations worldwide this program will give you the skills to bring effective solutions to a global corporate environment. Our innovative Bachelor of Laws (LL.B.) program is centered on the fundamentals of civil and common law, using comparative methodologies with a focus on European Union law, and modeled after the expertise of the world-ranked IE Law School. We train corporate lawyers who can work with international clients in cross-border transactions and become leaders in their organizations and in society.

#### **Dual Degree in Laws + International Relations**

#### **Dual Degree in Business Administration + Laws**

#### **Dual Degree in Philosophy, Politics, Law and Economics + Data & Business Analytics**

## MASTERS

- › Executive LLM.
- › Master in Global Corporate Compliance (LLM).
- › Master in Global Taxation (LLM).
- › LLM in International Business Law.
- › Master en Derecho Transnacional de los Negocios (LLM).
- › Master en Asesoría Fiscal de Empresas (LLM) Spanish.
- › Master en Asesoría Jurídica de Empresas.
- › Doble Master en Abogacía, Emprendimiento y Tecnología (LLM).
- › Doble Master en Abogacía y Asesoría Fiscal de Empresas (LLM).
- › Doble Master en Abogacía y Asesoría Jurídica de Empresas (LLM).
- › Doble Master en Abogacía y Asesoría Jurídica de Empresas bilingüe (LLM).







Students on the IE University campus in Madrid during their break between classes.

# My Studies

Studying at IE University means not only that you will receive the most up-to-date education; you will also be joining a community of exceptional academics who share your passion and look forward to guiding you throughout your degree. They will help you learn and provide you with the tools that will help you become the professional you want to be.

|   |    |
|---|----|
| FIVE REASONS TO STUDY THIS DEGREE AT IE UNIVERSITY                      | 8  |
| STUDENT PROFILE   | 9  |
| THE PILLARS OF PHILOSOPHY, POLITICS, LAW AND ECONOMICS AT IE UNIVERSITY | 10 |
| FOUNDATIONS OF PHILOSOPHY, POLITICS, LAW AND ECONOMICS                  | 12 |
| STUDY PLAN  | 14 |
| LANGUAGE PROFICIENCY TRACK  | 18 |
| IE MODULE   | 20 |
| PROFESSIONAL CAREERS  | 22 |
| THE DUAL DEGREES  | 26 |



# FIVE REASONS TO STUDY THIS DEGREE AT IE UNIVERSITY

A sure path to success

## DISCOVER A GLOBAL OUTLOOK

With a solid foundation in the fundamentals of philosophy, politics, law and economics, you will develop a unique, holistic perspective to understand complex global dynamics.

3

## PURSUE CAREERS IN THE PUBLIC AND PRIVATE SECTORS

Professional opportunities are increasingly linked to a more complex and globalized world. Our students develop a critical thinking skill, helping them drive change in the public or private sector.

4

1

## BENEFIT FROM A BROADER PERSPECTIVE WITH PHILOSOPHY

Philosophy gives you the ability to synthesize, explore, and visualize fundamental concepts in new and invigorating ways, you will be able to penetrate complex problems and understand their origin. It's the perfect tool to become a well-rounded professional in dynamic global environments.

2

## WE'RE WORLD- RENOWNED

IE Law School and IE Business School are all recognized by prestigious international institutions including the European Commission and AACSB Law Schools Global League.

5

## OBTAIN A FULLY ACCREDITED DEGREE

The Bachelor in Philosophy, Politics, Law and Economics is fully compliant with the Bologna Process and is accredited by the Spanish Government and the European Higher Education Area (EHEA).

# STUDENT PROFILE

Defining your future

IE University welcomes students who embrace change and seek an innovative learning experience. Our unique community is formed by students from over a hundred countries and a faculty made up of prestigious academics, successful professionals, and industry leaders. Through a personalized path and a student-centered methodology, IE University helps students enhance their unique value and play a leading role in shaping the world.

## THE BACHELOR IN PHILOSOPHY, POLITICS, LAW AND ECONOMICS

IS FOR INDIVIDUALS WHO ARE hard-working, analytical problem solvers and critical thinkers who are passionate about blurring the lines between disciplines and understanding how they interact with each other in global contexts.

LOOKING FOR a deeper view of reality that will allow you to understand how economic and political systems play an important role in developing strategic solutions for organizations.

TO BECOME  
A global policymaker;  
A macroeconomics consultant;  
A global finance consultant;  
A leader in a global non-profit organization;  
An expert in government and society development;  
A financial journalist.

## GRADUATE PROFILE

The person you will become is a professional with the capability of understanding how the global environment is shaped and influenced by many dimensions. The person you will become is a leader with a deep understanding of the processes and systems that shape our societies. Philosophy, Politics, Law and Economics, you will be able to comprehend these four diverse but converging fields by truly understanding the relations between each other and the dynamics of their integration in global contexts.



# THE PILLARS OF PHILOSOPHY, POLITICS, LAW AND ECONOMICS AT IE UNIVERSITY

Shape the future of societies and organizations

The Bachelor in Philosophy, Politics, Law and Economics (PPLE) is an applied and multidisciplinary degree for those wanting to learn about the system dynamics underpinning how the world works. By integrating knowledge and hands-on practice in philosophy, politics, law and economics, students develop a deep understanding of the dynamics that dictate the relationships between these four fields, empowering them to become agents of change and have a meaningful impact in a globalized world. Conceived from a joint effort of the IE Law School and IE Business School, this innovative degree prepares a new generation of analytical and strategic professionals who will shape the future of governments, societies, and organizations globally.

## LEARN BY DOING

We connect theory with practice through diverse methods like case studies, advanced seminars, IE Labs, and real-life projects. These provide students with hands-on experience that simulates real-life challenges to foster their professional development in international settings. Through our practical learning approach, you will truly learn how to combine your knowledge in philosophy, politics, law and economics to solve global challenges.

## EXPERIENCE A WORLD-CLASS EDUCATION

This degree is the result of bringing together the expertise of IE Law School and IE Business School, all recognized worldwide for their academic and teaching excellence. The collaboration of these three schools represents a unique multidisciplinary approach to studying philosophy, politics, law and economics.

## HAVE AN IMPACT ON A GLOBAL SCALE

You will receive the necessary training to understand the relationships between diverse disciplines that outline the understanding of social and governmental systems. This will help you build a versatile profile capable of adapting to the complex globalized workplace of today and having a deep impact on development and social change.

## ACHIEVE A TRUE INTEGRATION OF PHILOSOPHY, POLITICS, LAW AND ECONOMICS

Learn how philosophy, politics, law and economics combined can shape governments, societies and organizations. Approach the study of politics, economics and law through a philosophic perspective, a single block of integration in which the four areas weave together logically and becoming a unique learning experience.

## WHAT IS PHILOSOPHY, POLITICS, LAW AND ECONOMICS AT IE UNIVERSITY?



**GLOBAL IMPACT**  
Have an impact on an international scale.



**EXCELLENCE**  
Backed by the experience and prestige of IE Law School and IE Business School.



**PRACTICAL LEARNING**  
Innovative learning tools and methodologies.

**Philosophy**



**Politics**



**Law**



**Economics**

**INTEGRATION**  
A true integration of philosophy, politics, law and economics.



# FOUNDATIONS OF PHILOSOPHY, POLITICS, LAW AND ECONOMICS

An internationally recognized program

The Bachelor in Philosophy, Politics, Law and Economics (PPLE) has its roots in the PPE category. This category is comprised of multidisciplinary degrees that combine the study of three different disciplines (originally philosophy, politics, and economics). The first PPE degree was offered by the University of Oxford in the 1920s as a modern version of their classical studies. This holistic model was profoundly successful and many of the most prestigious universities worldwide followed it. Today, these degrees are offered by top institutions like IE University where the young leaders of tomorrow are being trained to shape the future of societies and organizations globally.

## WHY PHILOSOPHY, POLITICS, LAW AND ECONOMICS?

Our world is shaped a countless number of factors that require us to consider issues from different perspectives. Individuals who are able to understand in depth the political, legal and economic elements under a philosophic approach of this new international landscape are in demand. The objective of the Bachelor in Philosophy, Politics, Law and Economics at IE University is to train a new generation of globally minded professionals. We will provide them with the most complete education in the fourth disciplines, teaching them to explore the economic principles, analyse the impact of politics on society and understand the legal sector and through philosophy they will be able to analyse and confront today's most complex issues, gaining more a complete,

multidimensional understanding that reveals wide-ranging and innovative solutions.

## WHY POLITICS?

Given the fact that politics and political institutions influence societies, economic decisions, and policymaking processes, being aware of how economic laws and regulations change is relevant for someone who wants to develop a career in either the public or public sector. Through some of the specific subjects you'll study, you will learn how to evaluate political actions, analyze affairs and policies, and make uniform decisions that will benefit members of a group or society.

## WHY LAW?

The law not only has the purpose of holding societies together and keeping them functioning properly, but it also

raises important and complex issues concerning equality, fairness, and justice, among others. Studying law and being aware of its influence in our daily lives will help you understand complex global issues, build arguments, understand policies, and think both critically and abstractly.

## WHY ECONOMICS?

Economics is the social science that studies how scarce resources are allocated based on the decision of individuals, companies, and governments.

By studying this, you will obtain the necessary perspective to look at social issues that arise from uneven wealth distribution, and you'll be able to apply an economic analysis to law and politics in order to conceive better policies and regulations.

## WHY PHILOSOPHY?

In today's globalized and technologically advanced dynamic, high-level professionals are confronted daily with problems and challenges that are unique to this moment in history. In such a complex environment, making the right decisions requires highly trained individuals with a holistic set of skills. By including philosophy in this degree, future influential leaders will be empowered to gain a deeper perspective of reality and think critically, logically, and ethically when considering the real-world societal implications of ideological approaches. We believe this discipline has the potential to not only be intellectually transformative for our students but will also guide them as they shape the world of tomorrow.





# STUDY PLAN

## The hunt for knowledge

### FIRST YEAR

Your first year will be a broad introduction to the fundamental concepts of political, philosophical, legal and economic systems. Throughout the year, you will explore the concepts at the root of these four areas, while considering how they interact with each other to shape societies, governments and organizations. In class, you will take a hands-on approach to solving real-world problems while strengthening your writing and public speaking skills.

### SECOND YEAR

In your second year, you will start studying more advanced courses, both in the areas of business and law. You will develop a deeper understanding of philosophy, politics, law and economics, which will allow you to build up the necessary skills to approach and solve the problems that affect governmental systems and global organizations. You

will also be venturing further into the world of law by studying Civil and Private Law, which will be crucial in order to become a professional capable of recognizing problems and proposing holistic solutions to solve such complexities from a multidisciplinary and international perspective.

### THIRD YEAR

During the third year, you will start studying the courses needed to develop a strategic vision that integrates both your law and business studies. You will also go deeper into business subjects in order to understand how the different business functions need to work together in order to accomplish effectiveness and success. You will systematically study human behavior and cognition, understanding the structure and interaction of human societies, cultures, and institutions.

### FOURTH YEAR

In your fourth year, you will have different courses that will help you develop the skills needed to become a successful business and law professional. You will be able to choose elective courses and broaden your studies in one of the three core areas of the degree. This will allow you to tailor your degree to your needs and preferences. During this fourth year you will also research and carry out your final project. By the end of the year you will present your conclusions to a jury and defend your results.

### FIFTH YEAR

*Only for dual degree with LLB*

During this optional last year, which is for students who choose the Law track in their fourth year and wish to earn an LLB degree on top of their PPLE degree, you will have to work hard to deliver both the PPLE and LLB final projects. You will be able to choose the topics that you like most, explore them in depth, and present a written project, defending it in front of a jury. You will also study more advanced courses in both business and law, like Legal Thought, Productions and Operations Management, Advanced Taxation, and Management Information Systems.



## Study Plan

### LOCATION

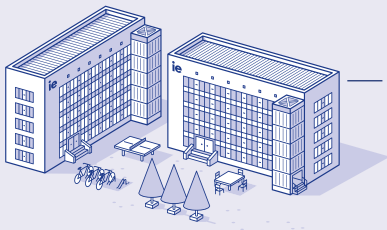
Segovia

YEAR 1 2



Madrid

YEARS 3 4



### FIRST YEAR

#### First Semester

|  |                                   |
|--|-----------------------------------|
| Mathematics                                | European Legal History            |
| History of Ancient and Medieval Philosophy | Microeconomics                    |
| Elementary Logic                           | Introduction to Political Science |

#### Second Semester

|                                    |                                     |
|------------------------------------|-------------------------------------|
| Research Methods and Data Analysis | Constitutional Law                  |
| Social Seminar I                   | Macroeconomics                      |
| Modern Political Philosophy        | Government and Comparative Politics |
| Contemporary Political Philosophy  |                                     |

### SECOND YEAR

#### First Semester

|                            |                                      |
|----------------------------|--------------------------------------|
| Probability and Statistics | Public International Law             |
| Epistemology               | Public Economics                     |
| Philosophy of Science      | Public Administration and Management |

#### Second Semester

|                               |   |
|-------------------------------|---|
| Entrepreneurship              | Game Theory and Industrial Organization |
| Social Seminar II             | Econometrics                            |
| Philosophy of Social Sciences | Public Policy Analysis                  |
| European Union Law            |   |

### THIRD YEAR

#### First Semester

|   |                     |
|---|---------------------|
| Technology: Data Insights and Visualization | Administrative Law  |
| IE Challenge                                | Monetary Economics  |
| Metaphysics                                 | International Trade |

#### Second Semester

|   |                               |
|---|-------------------------------|
| Social Seminar III                      | Administrative Economic Law   |
| Moral Philosophy                        | Geopolitics and Globalization |
| Legal Philosophy                        | Technology and Public Policy  |
| Introduction to Private Law - Civil Law |                               |

### FOURTH YEAR

#### First Semester

Exchange / Electives / Internship

#### Second Semester

Electives (Specialization) Final Project

#### Law Electives

|                           |                       |
|---------------------------|-----------------------|
| Business Law              | Law & Economics       |
| International Arbitration | International Tax Law |
| International Trade Law   | Criminal Law          |

#### Economics Electives

|                                    |                                  |
|------------------------------------|----------------------------------|
| Economic Development and Growth    | Digital Economics                |
| Financial Institutions and Markets | Economic Reporting               |
| The Welfare Economy                | Urban Economics and Smart Cities |
|                                    | Political Risk Analysis          |

#### Politics Electives

|   |  |
|---|--|
| European Union: Power, Politics and Economics | The Ethics and Development of Sustainable Cities |
| Social Development and Entrepreneurship       | Applied International Current Affairs            |
| External Diplomacy and Policy                 | Social and Internet Communication                |
| Ethics, Values and Public Policies            | International Terrorism                          |

#### Philosophy Electives

|                           |                                      |
|---------------------------|--------------------------------------|
| Philosophy of Language    | Esthetics                            |
| Philosophy of Mathematics | Continental Philosophy               |
| Philosophy of the Mind    | Applied and Political Ethical Issues |

### COMPONENTS

|                                   | CREDITS    |
|-----------------------------------|------------|
| Basic Courses                     | 60         |
| Core Courses                      | 120        |
| Elective Courses                  | 48         |
| Final Project                     | 12         |
| <b>Credits needed to graduate</b> | <b>240</b> |

**Note:** this information is subject to change. Please contact the Admissions Department for an updated curriculum.





## “PPLE gives you a diverse background and a wide spectrum of knowledge of the main features of society”

**Julián Montañó,**  
*Coordinator of Academic Innovation*

**Why is it important to have professionals with a deep knowledge in philosophy, politics, law and economics?**

What's important is not only the precise knowledge in philosophy, politics, law and economics, but the capabilities that students acquire. Those capabilities are the enhanced capacity of analysis, of getting to the root of social behavior and social structures and of determining the causes and effects of a situation as well as cross referencing information with accuracy in order to predict and understand social movements.

Law, economics, and politics are the three forces that govern social actions. First of all, all of our actions are determined by the sketches of law, hence the importance of having a strong knowledge. When it comes to economy, it plays a huge role in helping society decide on the optimal allocation of limited resources and, for that reason, our aim is to be aware of economical conditions and how they currently influence the different industries. Politics, in third place, is the activity that deals with both law and economics.

Furthermore, through the lens of philosophy, students will

explore these three disciplines from different perspectives and points of view.

PPLE gives you a diverse background and a wide spectrum of knowledge of the main features of society. In the end, changing things is the main objective of someone with university studies, and having a say in these areas is one of the most straightforward ways to do it.

**Who is the ideal candidate for this degree?**

The ideal person for this degree is someone with intellectual curiosity, someone who is looking forward to combining both analytical skills and a synthetic view. The ideal person for this degree is someone who is not happy with how things are in today's society and wants to make them better. Someone with a sense of intellectual adventure, willingness to discover unimagined things about the way we behave socially, and, in that sense, discover new territories.

**How is the degree structured in order to fulfill each student's career path?**

The main feature of this degree is the merging of the three fields and how the students acquire the quantitative and qualitative analytical skills necessary to develop a career in these areas. Students not only

learn theory, but they get to shape their own paths by being part of a hands-on program that allows them to pursue their personal motivations and objectives.

At IE University we make sure students are aware of all the different career options they have, and we have a practical approach that allows them to experience situations first-hand in order to learn how to deal with situations in a near future.

**What type of career can a student expect to develop after graduation?**

Once students graduate, they can develop a career in any of three areas; economic analysis and business both in the public and private sector, legal issues, and political matters. I must add that the business market is becoming increasingly interested in students with a PPLE profile, mainly because they are prepared to analyze data and obtain valuable information for companies.

**Could you share a piece of advice with future students?**

Read books. Read novels. Read essays. Read newspapers. Read magazines. There's no other way. Reading and going into other people's ways of seeing things is the best way of shaping your mind.



# LANGUAGE PROFICIENCY TRACK

Develop the English skills needed for a successful international career

Studying at IE University means that once you graduate you will get immersed in an international environment and you will have to face challenges at a global scale. In order to prepare you for the real world and avoid language constraints, our bachelors are fully delivered in English. For those who need to improve their language skills in order to study in this international language and graduate with a proficiency level of the language, we offer a special track during the first year.

The Language Proficiency Track (LPT) has been designed for those students who wish to progressively adapt to studying fully in English at IE University. This track is available for first-year students of this program. The LPT will allow you to access the Bachelors and Dual Degrees fully in English and study with people from over 130 nationalities while reinforcing your language skills. The enrolled students have an early start that begins a few weeks before the academic year, and lasts one academic year.

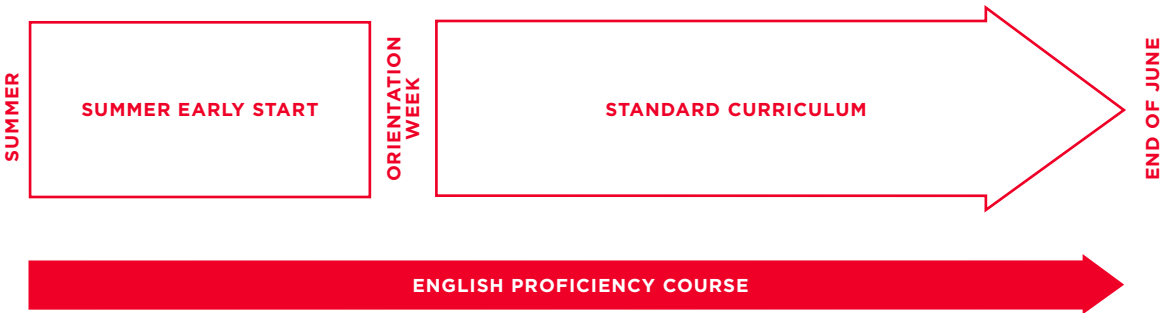
**Summer Early Start**  
Here you will go through the first unit of the English Proficiency Course and you will study all the courses in English. The Summer Early Start will begin in mid-August until the official start date of the course.

**Continuous support throughout the first year**  
In addition to your regular subjects, throughout your first year you will have some mandatory courses that are meant to improve your English skills to reach the required level.

**WHO IS IT FOR?**  
All non-native English speakers' candidates who need to enhance their English skills from their very first year of studies in order to go through the whole degree in this language.

- THINGS TO REMEMBER**
- 1. The Language Proficiency Track is mandatory for those candidates who have been admitted to the LPT courses. This will not only enhance their language skills, but it will help them build their confidence, acclimatize and adjust culturally.
  - 2. The Summer Early Start is not replaceable for a summer course abroad or English classes in an academy, since it is part of the Bachelor Degree programs and you will go through specific content relevant for your studies.
  - 3. The reinforcement subjects are compulsory and cannot be replaced by other courses.
  - 4. In year 2 all LPT students will study the exact same subjects as the other undergraduate students.

THIS IS HOW YOUR FIRST ACADEMIC YEAR WILL LOOK IF YOU DO THE LPT



# IE MODULE

## Your keys for development

The IE Module consists of key subjects for your professional development which form part of every bachelor program from the first to the third year. In this module, you will acquire basic skills that reflect the university's culture and vision, and which reinforce the transversal components of our model (IEU Labs, advanced seminars, electives, and languages). You will also benefit from progressive learning, where content is structured to increase gradually in difficulty and in its optional character, and where you'll work with students from other programs.

The IE module subjects are based on four pillars: entrepreneurship, a humanistic and rigorous approach, diversity, and innovation.

### FIRST YEAR

During your first year, you will develop a broad understanding of business organizations and gain specific knowledge in areas such as markets, customers, finance, operations, and communications, among others.

You will also undergo technological training to remain at the forefront of the digital world and make the most of the opportunities it offers. You will also develop your writing and presentation skills, which are essential to professional success.

### SECOND YEAR

Your second year will be focused on analyzing reality from different perspectives in order to develop your own points of view, and on establishing positive conditions for your success. You will learn how to influence, motivate, and encourage others towards effectiveness and productivity.

The aim of our humanistic approach is to train young inventors, visionaries, and world-changers who, by exploring the humanities, can discover new paths to reveal unexplored aspects of reality.



### YEAR ONE

|                         |        |
|-------------------------|--------|
| Business Management     | 6 ects |
| Technology Fundamentals | 3 ects |
| Presentation Skills     | 3 ects |
| Writing Skills          | 3 ects |

### YEAR TWO

|                                    |        |
|------------------------------------|--------|
| Humanities                         | 6 ects |
| Behavioral and Professional Skills | 3 ects |

### YEAR THREE

|                   |        |
|-------------------|--------|
| Global Challenges | 6 ects |
|-------------------|--------|

### THIRD YEAR

The complex reality of today's globalized world demands professionals capable of having impact on a global scale. At IE University, we teach the skills and tools students need to become successful leaders capable of managing projects in an international setting. On the one hand, you will be immersed in a multicultural and international setting from day one that will shape your mindset.

On the other hand, you will take courses specifically designed to help you perform effectively in demanding professional settings. This training is crucial to your success as a global professional, regardless of your area of study.

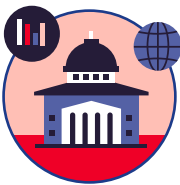




# PROFESSIONAL CAREERS

## A world of opportunity

Once you finish your degree, you'll be ready to get out there and develop your career in a wide range of areas. Whether you are inspired by working in law, political science or economic consultancy, as an IE University Philosophy, Politics, Law and Economics graduate, you will be more than prepared to use your expertise to provide a service to society on an international scale, and to make a positive impact in your field and potentially beyond. Below you will find some of the career paths available to PPLE graduates.



**LAWYER**  
If you decide to develop a career in law, you will be analyzing how economy impacts legal systems. You will also develop macroeconomic and microeconomic theories and apply them to solve legal and political issues. You will research the effect that legal institutions have on distributing, using, and limiting political power and you will practice as a corporate lawyer advisor for either multinational organizations or public sector institutions.



**POLITICAL SCIENTIST**  
If you decide to develop your career in political science, you'll be evaluating the impact of policies and laws on societies, governments, and corporate systems. You will also forecast political trends to measure their impact in legal and economic systems and examine how political decisions affect societies, businesses, and organizations. Last but not least, you will be gathering and analyzing market data using quantitative methods to develop economic theories.



**ECONOMIC CONSULTANT**  
If you've always pictured yourself working in economic consultancy, now you will get to do it! You will be in charge of improving performance and design policies for organizations both in the public and private sectors, as well as researching and analyzing economic data using models and statistics to forecast market trends. You will also provide financial advice to companies and organizations on how to minimize risk in complex economic environments and manage and supervise the financial and economic performance of organizations and governments.



**GLOBAL POLICY MAKER**  
The political, philosophical, legal, and economic savvy you will acquire in this program will prepare you to become a sharp global policymaker. In this role, you'll put your multidisciplinary skills into practice, designing smart and sustainable policies for organizations, governments, and NGOs at a global level.





# “Philosophy, politics, law and economics are the languages with which the architecture of modern societies is written”

**Javier de Cendra,**  
Dean of the IE  
Law School

## **What is Philosophy, Politics, Law and Economics (PPLE) at IE University?**

Oxford University was the first institution of higher education to launch an undergraduate degree in Politics, Philosophy, and Economics (PPE) in the 1920s. The underlying motivation was to create a new version of the classic degrees, focused on training future civil servants for the British Empire. The combination of the three disciplines within one program would give students the ability to analyze, in comprehensive and rigorous ways, the complex challenges facing the country and to come up with sound solutions.

Over the years, the PPE at Oxford University became highly prestigious and trained a number of highly influential political and business leaders, such as Bill Clinton, David Cameron, and Isaiah Berlin, to name a few. Many universities followed on the heels of Oxford's success, to the point that nowadays there are over a hundred academic institutions offering broadly similar programs. Having such a program is a hallmark of excellence because it points to the comprehensive nature of a university in the social and human sciences. Of course, not all those programs are identical, but they share a common denominator consisting of the inclusion of at least two out of the three disciplines offered at Oxford, to which sometimes one or two are added. IE University is proud to take such a robust academic tradition as a starting point to develop

a truly innovative program. We have chosen to combine philosophy, politics and economics with law, recognizing that legal studies help students develop a rigorous and analytically oriented thought process while enabling them to gain knowledge of one field that, together with philosophy, politics and economics, give shape to complex modern societies. Indeed, philosophy, politics, law and economics are the languages with which the architecture of modern societies is written, and thus understanding them in depth is key for those who have a strong motivation to become the leaders of the public and private sectors within the coming decades. Moreover, we approach those disciplines from a global perspective in recognition of the highly globalized nature of the world and complement it with an understanding of technology and behavioral sciences. In a nutshell, through its PPLE, IE University is offering a program that, while fully falling within the category of PPE's, is truly innovative.

## **How do these disciplines interact with and help shape the local and global contexts we live in?**

As mentioned before, philosophy, politics, law and economics are used to write the “code” underlying contemporary social institutions. Hence, any related challenge has legal, political, philosophical and economic dimensions, and thus to carry out accurate analyses and to develop adequate solutions, it is necessary to fully incorporate those



four dimensions in a coherent fashion. Furthermore, within a highly globalized and technological world, problems often have a global and technological dimension that must also be taken into account. Usually, complex problems are broken down into smaller units, each to be handled by different teams of experts in one discipline, in order to allow for a comprehensive understanding and to generate actionable insights. While this approach is useful for the purpose of facilitating analysis, it is important that those called to propose and implement solutions do not lose sight of the whole picture. For this to be possible, experts need to master a complex set of skills. This is a tremendous challenge in itself, but one that must be met if we want to truly understand the world we live in.

## **What are the advantages of combining these four social science disciplines into a coherent whole?**

By mastering four disciplines, a global mindset, and technological literacy, and by working in groups to understand and solve challenges, PPLE graduates will develop both the capacity to break down complex problems to perform deep analyses, as well as to reassemble the separate parts in order to devise workable solutions. They will be able to understand human behavior in context, to decode sophisticated social and institutional structures, and to design processes and procedures that can effectively take on challenges. Last but not least, IE University's PPLE adopts a very entrepreneurial approach, through which students are enabled and encouraged to be creative in combining all the abovementioned disciplines in seeking solutions. This does not mean that students necessarily need to develop new ventures to tackle the problems, but rather that they will have the confidence and skills necessary to address them, and the

courage to propose unexplored solutions if required.

## **What are the key features of PPLE at IE University?**

The key features of the degree are closely correlated with the ethos of IE University. It doesn't just bring together four academic disciplines, but does so within a global orientation, an entrepreneurial approach, a practical mindset, and with the aid of powerful modern technologies. In particular, I would highlight the case-method employed at IE University and in this program. Indeed, a lot of effort has gone into the design of practical case studies that will help students confront real or constructed scenarios that present complex problems and demand solutions. Students will solve those cases by working in teams composed of classmates from different countries, hence learning from a large diversity of opinions and backgrounds. In sum, it is the particular blend of theory and practice, of national and global levels, and of traditional disciplines interspersed with modern technologies that makes IE University's PPLE so unique.

## **Who should study this degree?**

The Bachelor in PPLE is for bright students with an analytically-oriented mind, a rich set of interests, and a global outlook, who are fascinated by complex social processes and have a desire not just to understand them in depth but also to act upon them so as to drive change. Because of these characteristic traits, it is likely that these students will either naturally have an entrepreneurial spirit or will develop one throughout their studies.

People who share many or all of the abovementioned characteristics should consider pursuing this degree regardless of the specific professional career they want to develop; they will attain

a broad set of skills and interests over the course of their studies that will be relevant anywhere in the world, in any sector of the private economy or of the public governance system.

## **What are the potential careers for people who study this degree?**

In general, programs within the PPE family are not specific to one professional career. Rather, they focus on providing a top-notch, comprehensive education across a number of crucial disciplines within the social sciences, with the conviction that graduates will bring value to both the public and the private sectors across the economy. Indeed, one reason PPEs are so prestigious all over the world is precisely due to this holistic yet rigorous approach to education in the social sciences. This is why universities generally don't put too much stress on the professional paths that their graduates may follow.

IE University's PPLE shares those goals with other programs of the PPE family. At the same time, we have a strong commitment to the development of leading professionals with a global outlook and an entrepreneurial mindset. So while embracing the spirit of PPEs, our PPLE gives students the right set of skills to succeed in whatever professional path they choose to follow. Just to give a few examples, our graduates could find a job in multinationals, in the financial sector, in consultancy firms, in government, or in intergovernmental or non-governmental organizations. In addition, students who want to practice law will be able to do so provided they spend an additional year at IE University so as to complete the law curriculum. This options gives students who want to practice law a key advantage over other law students.



# THE DUAL DEGREES

Two fields of study in one program

The Dual Degrees at IE University offer students the opportunity to graduate with two bachelor's degrees by completing an additional year of academic studies. These prestigious programs are a great option for students who want to focus their careers in two distinct yet connected fields of study. By combining two diverse subject areas, our Dual Degree students develop a multidisciplinary profile, enabling them to play important roles in solving complex global issues where boundaries between disciplines continue to disappear.

## DUAL DEGREE IN PHILOSOPHY, POLITICS, LAW AND ECONOMICS + DATA AND BUSINESS ANALYTICS

This program prepares professionals to understand complex social environments and make data-driven decisions to positively impact societies, organizations, and companies. In this degree, you will gain strong analytical skills by experimenting with the latest data technologies and tools applied to the political, philosophical, legal, and economic fields. Aimed at insightful individuals who possess sharp critical thinking abilities, this dual degree will prepare you to become a leader capable of making a real impact on today's most pressing social issues.



# FIVE REASONS TO STUDY A DUAL DEGREE AT IE UNIVERSITY

- 1 BUILD A WELL-ROUNDED PROFILE**  
Our Dual Degree programs integrate two different yet converging fields. This allows you to learn about two areas that you're passionate about and increase your potential in both fields. Holding this type of holistic degree means you will have a unique skill set and versatile training, equipping you to play an active role in the world.
- 2 EXPAND YOUR CAREER POSSIBILITIES**  
Studying a Dual Degree grows your career options. You will have a more competitive profile with broad knowledge and skills in multiple fields and will stand out with top companies and headhunters. You'll have the flexibility to move between different fields, sectors and industries.
- 3 ENHANCE NETWORKING OPPORTUNITIES**  
Pursuing two different degrees will help you broaden your professional network and make diverse connections. Developing professional relationships in two different fields will put you ahead of the game when starting your professional career in a world where the line between one profession and another is increasingly blurred and each depends on the other.
- 4 EARN TWO FULLY ACCREDITED DEGREES**  
When completing a Dual Degree, you effectively graduate with two distinct undergraduate degrees, achieving a unique professional profile that few people possess. All of our Dual Degree programs are fully compliant with the Bologna Process and accredited by the Government of Spain and the European Higher Education Area (EHEA).
- 5 CUSTOMIZE YOUR CURRICULUM**  
At IE University, education is student-centered. You will be able to personalize your study plan in order to reach your career goals. As a Dual Degree student, you will be able to build your own educational experience, deciding how to use your time. Our faculty will guide you, helping you complement core courses and create a holistic profile that is geared towards your future.





# OUR STUDENTS

## Meet our diverse community

**NIKLAS HESS**

Germany  
Dual Degree in Business  
Administration and Laws

"Having grown up in Germany then studying in the U.S. for three years, I understand the importance of diversity and an international environment. This is why I chose IE University. On campus, I play on the volleyball team, I'm an IE University ambassador, and I founded the Rotaract Club at the campus in Segovia."

**PIERS NDOKE BUTT**

Canada  
Bachelor of Laws

"For the past three years, I've dedicated my life to hip hop, both as an artist and a manager. My music has a strong emphasis on lyrical prowess and ingenuity, and that is why I'm studying Law here at IE—law is the art of using nothing but words to decide others' fates."

**PALOMA ZORRILLA GARCIA**

Spain  
Dual Degree in Laws & International Relations

"I'm studying Law and International Relations at IE University. After working in a small NGO for five years with big dreams and projects, I believe I can change the world."

**MYRIAM BOSCAROLLI**

Italy  
Bachelor in Psychology

"I grew up in a very international environment and am thankful to continue studying that way. IE University allows me to understand people of different countries, cultures, religions, and backgrounds even better."





# My Enrichment Opportunities



From their first year, students form close ties with their classmates and with students from higher classes, who help and guide them throughout their journey.

Your experience at IE University will involve a lot more than your academic studies; we offer an exceptional range of opportunities that allow you to tailor your studies to suit your specific career goals and enhance your employability by obtaining extra qualifications.

IE University takes an applied and student-centered approach to education, identifying your unique strengths and giving you the chance to build your own path.

In addition to the core degree, you will be able to personalize your program and develop your skills by adding complementary courses, advanced seminars, internships and IEU Labs.

|              |    |
|--------------|----|
| IEU LABS     | 32 |
| INTERNSHIPS  | 38 |
| STUDY ABROAD | 40 |

# IEU LABS

## Learn by doing

IEU Labs are IE University’s alternative to traditional work placements. They provide hands-on, internship-like experience on campus to first- and second-year students who wish to begin gaining professional experience. There are nine labs to choose from, and each allows you to build your professional profile and gain valuable practical knowledge of different sectors. You will also extend your professional network through direct contact with managers and directors of leading companies.

Throughout the program, you will work under the tutorship of professors, while experts provide training in areas like marketing, funding, and strategy and legal aspects, among others.

When the time comes to choose, you will be able to apply to a lab that matches your professional interests, or try one outside of your field of study in order to broaden your knowledge and work with students from other programs.

All labs start at the beginning of the academic year and continue year-round. In May and June, you will work full-time in the IEU Labs and participate in common modules and activities, including advanced seminars for professional skills, weekly presentations of your work, business simulations, and extracurricular activities.

Want to learn about the labs we offer? Keep reading!

“The IEU Labs give students a genuine taste of work as members of a consultancy team in the sector of their choice, from design to finance. Already, various labs have had real-world successes, providing solutions for clients including Madrid’s Thyssen-Bornemisza Museum and the investment bank Arcano.”

Isabel Sánchez,  
Director of IEU Labs and Business  
Administration Undergraduate Studies

### Start-Up Lab

The *IEU Start-Up Lab* is an incubator where you can develop your business plans and make them investment-ready with guidance from professors and entrepreneurs.

**Sample project:**  
**PAELLA CHEF**

**Objective:** specialize in the creation and distribution of canned paella in Spain and the rest of the world.

**Best things about it:** we got to start a company from scratch and be present at each step of the process, from the business plan to the corporate image. We knew that in June we were presenting to real investors, which was very motivating!

**Most challenging aspect:** customer acquisition. Even though we stated how we were planning on reaching out to customers—through paid research, organic research/SEO, PR, social media, inside sales, etc.—we ended up realizing that some of our assumptions were wrong or too expensive, so we had to rethink our customer acquisition protocols.

Members of the *Social Impact Lab* in an aid program in Ghana with local volunteers.



### Marketing Lab

In the *Marketing Lab*, you will be involved in brand building, strategy creation, and the implementation of marketing plans. You will also work on marketing research and consumer insights for a range of companies and institutions, as well as offer support to new startups and entrepreneurs at IE University.

**Sample project:**  
**PÉREZ-LLORCA**

**Objective:** analyze a law firm’s website, compare it with the global market and come up with a proposal that will differentiate it from its competitors.

**Best things about it:** meeting with the client to obtain feedback and adapt our proposals to best meet their requirements and needs. Knowing that they were going to implement our ideas was a huge motivation.

**Most challenging aspect:** finding the perfect balance between being creative and innovative while also staying loyal to the brand’s image and values.

### IR Lab

This lab is a fully tutored working space where you can execute professional projects with an international dimension for private companies, public organizations, and nonprofits. Our partner institutions work in different industries and sectors: consultancy, international development, public affairs, diplomacy, etc.

**Sample project:**  
**WEBER SHANDWICK**

**Objective:** analyze the political, social, economic, and legal trends that Weber Shandwick’s multinational clients must be aware of while doing business in different countries, in order to propose an institutional relations and communication strategy.

**Best things about it:** the opportunity to work in multidisciplinary teams, guided by Weber Shandwick experts, and identify industry insights that allowed us to come up with accurate analyses and proposals.

**Most challenging aspect:** presenting results and strategy proposals to the clients that were worthy of Weber Shandwick’s reputation and market standards.

### Social Impact Lab

In this lab, you can work with nonprofit organizations and other initiatives to manage social projects in international settings. You will also have the option to travel to developing countries in order to participate in real projects that have a visible, tangible effect.

**Sample project:**  
**FINANCIERS WITHOUT BORDERS NGO**  
**Objective:** develop a microcredit project and a basic financial literacy course to improve the socioeconomic conditions of the Larbie community in Awutu, Ghana.

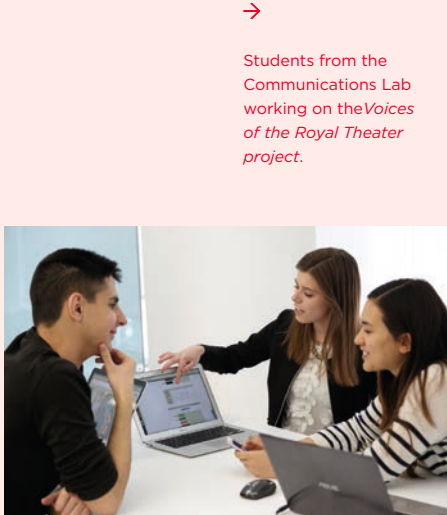
**Best things about it:** we got to travel to Ghana for research and data collection, which was a fantastic experience. All the information we obtained was used to provide financial and organizational recommendations so that the institutions we were working with could achieve enough sustainability to become attractive to private investors.

**Most challenging aspect:** knowing that all of our decisions were going to affect real people.





Professors guide students through the different stages of their IEU lab projects.



→  
Students from the Communications Lab working on the *Voices of the Royal Theater* project.



## D-Lab

This lab takes an integrated approach to the world of design and architecture, with projects in urban and rural architecture, city planning, and with local tourism authorities.

**Sample project:**  
**FROM LIMIT TO LIVE IT**

**Objective:** come up with a proposal for an international temporary art contest to decorate Segovia's city wall. Establish the rules and create the graphic material to send out to participants.

**Best things about it:** it was a very creative project where all ideas were welcome. The contest had specific objectives, but we were encouraged to think freely and come up with innovative proposals in order to meet those goals.

**Most challenging aspect:** coming up with the evaluation criteria was one of the most challenging hurdles. We needed to make sure that each aspect evaluated would give real value to the contestant's proposals and at the same time make sure it was viable, innovative, etc.

## Finance Lab

If you want to work in the world of finance, this is the perfect place to get your career started. This lab focuses on analyzing financial markets and consulting companies on a range of financial issues.

**Sample project:**  
**ONE-TO-ONE CORPORATE FINANCE**

**Objective:** analyze a company's high-performance benefits, real estate transactions, and investments in private equity funds.

**Best things about it:** the fact that we got to evaluate a company's real activity and value.

**Most challenging aspect:** being able to think long-term and come up with flexible solutions to problems which have yet to arise.

## Legal Clinic

Students offer legal advice for startups, NGOs, nonprofits and institutions in need of legal consulting services. Several law firms also collaborate with this lab for research and consultancy to help their clients and firms.

**Sample project:**  
**PRODIS**

**Objective:** conduct a study among medium-sized enterprises in Madrid to ensure compliance with laws regarding the rights of disabled people.

**Best things about it:** we raised awareness about a topic that could make a huge difference in our society, particularly to those in poor health.

**Most challenging aspect:** finding out that a big percentage of the companies we interviewed are not aware of the law and the alternative measures to be implemented in hiring disabled people. That was quite discouraging.

## Sports Lab

This lab monitors and reports on issues pertaining to sports players, teams, and coaches, and produces research and consultancy for Spanish and European soccer clubs, Formula 1, and others.

**Sample project:**  
**ATLÉTICO DE MADRID**

**Objective:** predict and evaluate players' behavior.

**Best things about it:** we got to develop activities aimed at improving the lives of athletes and also demonstrate the value of sports to society.

**Most challenging aspect:** in order to be heard and get our ideas implemented, we needed to make sure that absolutely everything in our proposal was well founded and based on empirical evidence.

## Communication Lab

The *Communication Lab* works with the widest range of companies, institutions, and startups with communication needs. You will be in charge of creating content such as blogs, videos, and other media content according to the clients' needs.

**Sample project:**  
**VOICES OF THE ROYAL THEATER**

**Objective:** execute a project to transform the opera into an accessible and trendy activity for young people.

**Best things about it:** we first had to immerse ourselves in the world of opera singers in order to understand their passion for the art!

**Most challenging aspect:** avoid making assumptions about why young people aren't interested in opera. We needed to come up with effective ways to learn their reasons and motivations in order to create a campaign that would impact the target audience.

"Joining a lab is a fantastic experience since you get to know more about a topic that you are not very familiar with; in my case, finance. I've always been interested in it and this was a first step that somehow connected me to the real world around it."

Carmen,  
Finance Lab





A DAY IN THE LIFE OF

## “Studying PPLE gives you the unique opportunity to have three different perspectives on current, real-world events”

**Georgy Aroniya**  
IE University student

**What do you like most about studying at IE University?**

IE University is unique. The international environment alongside the culture of academia and state-of-the-art equipment, make IE University an institution that truly drives innovation. Once you're at IE University, you feel proud and smile because you know that coming here was the right decision.

**Are you involved in any extracurricular activities?**

I'm part of the IE Rugby family. The team, started only a few years ago, is sponsored by IE University, and the university organizes events and competitions in Spain and across Europe. Apart from sports, I go to talks, lectures and other various events organized on campus.

**What are your favorite subjects and why?**

Studying PPLE gives you the unique opportunity to have three different perspectives on current, real-world events. I absolutely loved *Microeconomics* and *Constitutional Law*, and I'm enjoy *Political Philosophy*. I am also a huge fan of *Contemporary and Modern History* and the way it's taught with a practical approach at IE University.



**09:00** Morning classes are the best. At least for early birds like me. Classes at IE University are flexible, with lectures and discussions that are both entertaining and educational. Professors are approachable and always ready to help not only during working hours but at breaks too.

**10:20** The first break of the day. My classmates and I like to hang out outside the cafeteria Refectory, while students from other programs prefer to go to The Cave. There are lots of things you can do in ten minutes. Sometimes we grab a snack, a sandwich or a cup of coffee.

**15:00** After a light lunch, language sessions begin. At IE University, students may specialize in a wide range of foreign languages. For me, investing time in learning the spanish language is a smart move not only for professional reasons, but also for my personal satisfaction.

**18:00** Classes are over. I rest for a while, then start preparing for the next day. I prefer studying at home, but there are several great places on campus to study as well. Some people like the Student Hub because of its cozy atmosphere, while others prefer the quiet environment of the library.

**22:00** Dinner is the best. I usually eat at home, but a few times each week, my friends and I have dinner together. Being able to easily hang out with friends is one of the best parts of the Segovia campus.



SCAN FOR  
MORE STUDENT  
STORIES



# INTERNSHIPS

In touch with the real world

Real-world professional experience is fundamental as students prepare to enter the working world. The Bachelor in Philosophy, Politics, Law and Economics offers internship opportunities with top international organizations. Gain experience in your desired field, experience new cultures and set yourself up for success.

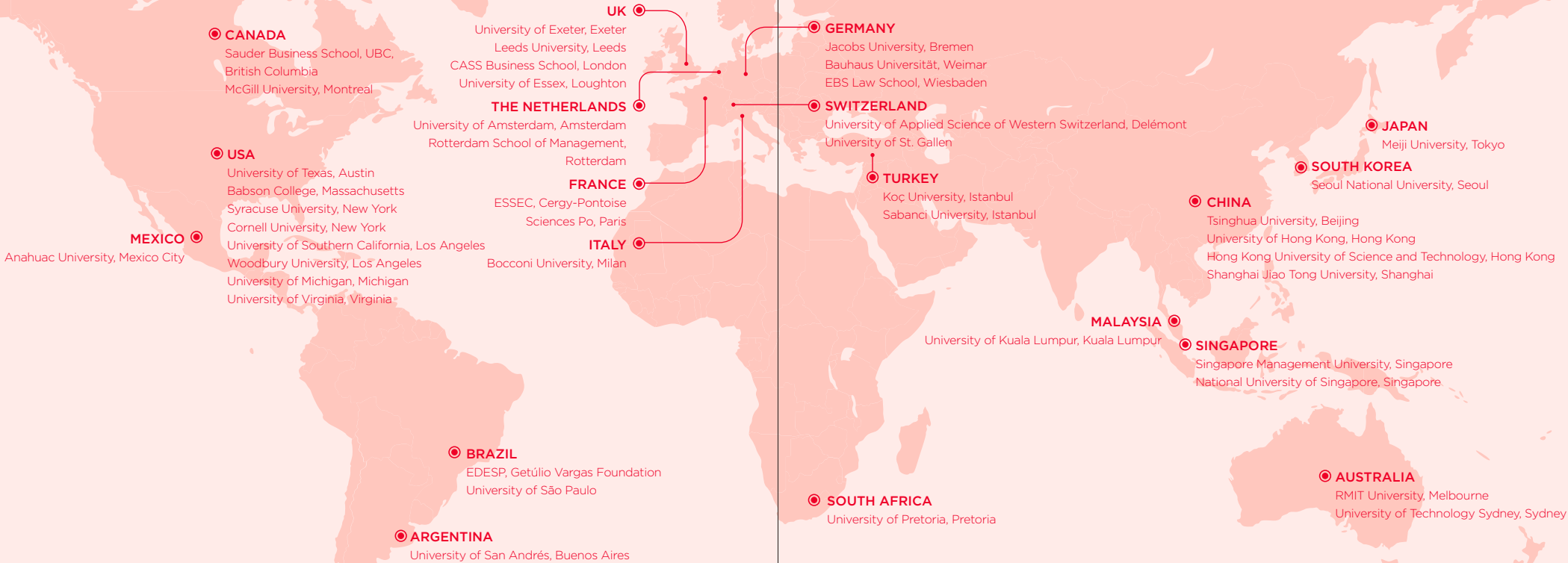
Our students have completed internships at Cuatrecasas, Accenture, Banco Santander, Bank of China, Cadena SER, Credit Suisse, Deloitte, El Mundo, KPMG, Permanent Delegation of Spain in the United Nations, PwC, Radio Televisión Española (RTVE), among others.



# STUDY ABROAD

## The world in your hands

Exchange partners vary from year to year and your options will depend on your program of study. The following list represents a sample for all IE University programs.



As a student at IE University, you will have several opportunities to develop global perspectives and cross-cultural competencies—studying abroad is one of them. Living in another country for a semester or two is a great way to build confidence and broaden your outlook by experiencing other cultures and making new connections. At IE University we believe that seeing your studies from new perspectives is a life-changing experience. That’s why we encourage students to spend one or two semesters at one of our more than 160 prestigious global exchange partner institutions in North and South America, Europe, Asia, Africa, and the Middle East.

### UNIVERSITY OF MELBOURNE AUSTRALIA

“For me, an exchange was a perfect opportunity to go on an adventure to the other side of the globe, especially after graduation and landing a job, making the move to another country for pleasure can be quite hard to manage.”



**EMILIJA BERZANSKAITE**, Lithuania  
Dual Degree in Business Administration and Laws

### NORTHEASTERN UNIVERSITY UNITED STATES

“When I look back my time at Northeastern University in Boston, there’s always something new that I can take from my time abroad and I am so grateful for the experience.”



**TOMOMI DAMBARA**, Japan  
Bachelor in Architectural Studies

### UNIVERSITY OF TEXAS UNITED STATES

“Living abroad has an unthinkable amount of advantages. Not only do you step out of your comfort zone, but you also meet amazing people along the way that will help shape your career.”



**JESÚS PASCUAL**, Spain  
Bachelor in Communication and Digital Media

### NATIONAL UNIVERSITY OF SINGAPORE SINGAPORE

“Do it, because those kinds of experiences are the ones that make you who you are. Do it, because it will bring you knowledge and values that will make you unique.”



**ELISE EL NOUCHI**, France  
Bachelor in International Relations





“Studying in Segovia has been one of the best decisions I have ever made”



STUDENT JOURNEY

“I really like the teaching method based on debates and reading... You learn through sharing and discussing your opinions”

Alicia Clara  
IE University  
student

I'm from Madrid, Spain but I lived in Switzerland and France

when I was little. I started studying a degree in Philosophy, Politics, Law and Economics a year ago in Segovia. What I like the most about this degree are the teachers. I really like the teaching method based on debates and reading. You know that when you get to class you will not be listening to a PowerPoint presentation. You learn through sharing and discussing your opinions. I think that's what differentiates IE University from the rest.

I'm part of the Debate Club and the Philanthropic Club. Members of both clubs get together to plan activities, conferences, workshops and campaigns. It's a great way to have a social life outside the classroom and to see friends.

I have also been an IE Ambassador and Open House Coordinator for a year. Open House events are organized for students who are interested in studying at IE University; we show them life on campus. This year I am also participating in the Mentorship Society, which connects student volunteers with freshmen. We provide first-year students with helpful information about campus, how to make contacts and friends and how to adapt to life at IE University. This year I will be mentoring three first-year Philosophy, Politics,

Law and Economics students. I love participating in these projects, advising future or new IE University students. I was fortunate to have a mentor during my first year at IE University and I found it very helpful.

Studying in Segovia has been one of the best decisions I have ever made. My first year, I lived in the Reyes

Católicos Residence Hall, which was very practical since everything was taken care of for me. This year, I'm sharing a flat with some girls. Segovia is an incredible city. It's small, but perfect for student life. Everyone is nice, there are many nationalities and cultures to experience right on campus... It is a very lively city full of activities and fun things to do.







IE University  
campus in  
Segovia

# My University

From the very beginning, you will undergo a transformational experience that will enhance your personal value and enable you to play a leading role in shaping the world and achieving your goals. You will receive an inspiring and challenging education that will broaden your horizons and will shape who you are and who you will become. It will connect you to the world and guide you on your unique path towards achieving your goals.

|  |    |
|--|----|
| FIVE REASONS TO STUDY AT IE UNIVERSITY | 46 |
| IE UNIVERSITY RECOGNITION              | 46 |
| IE UNIVERSITY CAMPUS                   | 48 |
| STUDENT LIFE                           | 50 |
| EMPLOYABILITY                          | 52 |
| ALUMNI                                 | 53 |
| ADMISSION PROCESS                      | 54 |



# FIVE REASONS TO STUDY AT IE UNIVERSITY

1

## CONNECT WITH A DIVERSE AND ACCESSIBLE FACULTY

Our diverse faculty is made up of both excellent academics and experienced professionals with international experience and close ties to the professional world. Also, our professors are completely accessible to students; you can enjoy daily contact with them, obtain regular feedback, and receive the support you need to accomplish your goals.

2

## TURN YOUR IDEAS INTO REALITY

We will inspire you to be innovative in any field or discipline by providing an environment where you can experience new ways of thinking, apply your creativity, and venture into the unexplored.

3

## PERSONALIZE YOUR PATH TO SUCCESS

Our innovative degree programs are recognized by the most prestigious associations in their respective fields, and integrate a broad range of teaching approaches and options that will allow you to shape your own education according to your professional aspirations.

4

## EXPERIENCE A PRACTICAL LEARNING METHODOLOGY

We combine theory with practice from the moment you begin your studies. You will apply what you learn in class to real-life cases and to your own projects. Each year, students are offered a range of internship opportunities to work on campus, in Spain, or around the globe. You will acquire an impressive set of skills and professional experiences that will make you an attractive job candidate after graduation.

IE University is ranked #3 worldwide for innovation in teaching methodologies \*

5

## BUILD THE PATH TO YOUR FUTURE

We help graduates launch their careers across industries and around the globe. Employers of leading companies worldwide consider IE University one of their top recruiting pools. You will also make friends for life and enjoy an active alumni network of more than 45,000 people worldwide that you can depend upon throughout your professional journey.



## IE UNIVERSITY RECOGNITION

### Prestige and performance

IE University occupies a leading position among higher education institutions in Europe and worldwide for its excellence in innovation and learning technologies. In addition, our undergraduate programs are recognized by the most prestigious associations in their respective fields, and highly regarded by employers at leading corporations.

#1

University in Spain

#7

University in Europe

#24

University Worldwide

**TIMES HIGHER EDUCATION**  
Global University Employability Survey and Ranking 2018

#1

University in Spain

#6

Best Bachelor in Business Administration Worldwide

#5

University in Europe

**\* YOUTH INCORPORATED**  
Global University Rankings 2019

#7

in Recruiter Satisfaction Worldwide

#9

in Student Satisfaction Worldwide

#18

Top University Worldwide



# IE UNIVERSITY CAMPUS

Your home away from home

As a student at IE University, you will gain an international outlook and global connections. You will benefit from diverse perspectives and experiences as you study with peers from around the world. Each year, an average of 130 different countries are represented on campus, and over 75% of students come from abroad.

## SEGOVIA

The campus in the city of Segovia offers a true campus experience. It is housed in the *Convent of Santa Cruz la Real*, a historic building declared a national heritage site in 1931. Segovia is only 25 minutes from Madrid by high-speed train, and welcomes students from over 130 countries to a global university setting with an academic and lively atmosphere. In Segovia, you'll find the perfect setting to become part of a close-knit community.

Segovia is a fairytale city full of narrow, twisting alleyways, Romanesque churches, and beautiful buildings. Additionally, this province of Spain has always been famous for its climate and traditional cuisine. It's not merely a city to be admired from afar; it's also a great place to live.

If you decide to study in Segovia, with the big city always within reach and history at your fingertips, you will experience the best of both worlds.

## MADRID

On our campus in Madrid, you will find a groundbreaking education experience, with access to cutting-edge resources, specialized classrooms, and modern facilities. Studying in Madrid provides an opportunity to immerse yourself in a dynamic environment at the center of one of Europe's most important financial capitals.

If you decide to study in Madrid, you will benefit from a global environment, top-tier networking opportunities, and facilities equipped with the latest technologies—all shared with the top-ranked IE Business School.



IE University campus in Segovia in the foreground. In the background, a view of the historic center.



Students after class socializing near the cafeteria in the IE University campus in Segovia.



Segovia and Madrid have excellent facilities. Students have ample space for studying, relaxation, and entertainment.



IE University campus in Madrid.



# STUDENT LIFE

## Connections and activities

The memories you make during your studies last forever and can change the course of your life. We believe in diversity as a lifestyle and are proud to say that our community is as diverse as can be, providing space for all types of interests and unlimited opportunities.

The Student Life office coordinates more than 115 clubs, which are divided into six areas: arts, sports, social causes, debates, entrepreneurship, and academics.

Below are some the clubs you can take part in.

### IEU CONFERENCE CLUB

The *IEU Conference Club* organizes talks and cocktails where some of the most powerful and influential people in the international arena answer questions related to their field of expertise. You'll get to know some of the secrets of their professional success, network with them, and have your questions answered!

### IEU GREEN CLUB

This club reaches out to the student community to raise awareness about environmental stewardship matters

and healthy lifestyles. They organize riverside hikes and other nature activities. If you like to escape from your routine and enjoy outdoor activities, this is the club for you!

### IEU HUMANITARIAN CLUB

This club organizes innovative events in service of various NGOs. Its president, Zainnab Al-Kurdi, started a campaign to inspire and protect women all over the world.

### IEU MUSIC CLUB

The *IE Music Club* aims to enrich its members' musical knowledge and provide the opportunity to play together as a group. Its talented artists perform creative adaptations of songs or original compositions.

### IEU SPORTS CLUB

Exercise is important, so both our campus in Madrid and Segovia offer a wide

“Our motto is ‘Talks that Inspire’. You see, we want to take a radically new approach to academic talks.”

Salvador Mompeán,  
IEU Conference Club Founder



The Real Casa de la Moneda in Segovia, is a space provided by the city council for activities such as exhibitions, music, conferences, and workshops.



“The IEU Alpine Club is your destination for any and all outdoor activities, bringing like-minded people together to enjoy the beauty of nature in a fun way.”

Benjamin Weber,  
Sports Club Founder

variety of sports for students to enjoy. The sports that we offer vary from campus to campus, since Madrid is a city campus and Segovia is a rural one.

Among the team sports we offer are: volleyball, basketball, indoor soccer, rugby, basketball, and tennis. In addition, IE University has special deals with several gyms and fitness centers, to make available other sports such as golf, tennis, paddle tennis, swimming, and many others.

Tryouts for IE University's official teams take place once every year, at the beginning of the fall semester.

“I've been living in Segovia for nearly two years and had no idea about its beautiful surroundings. Hiking by the river on Sunday was a nice alternative to spending the weekend in the city of Segovia or Madrid. For those who did not go with us, I highly recommend attending the next Green Club event!”

Ola,  
IEU Green Club





# EMPLOYABILITY

Launch your career internationally

IE University is ranked #8 for Career Services Worldwide

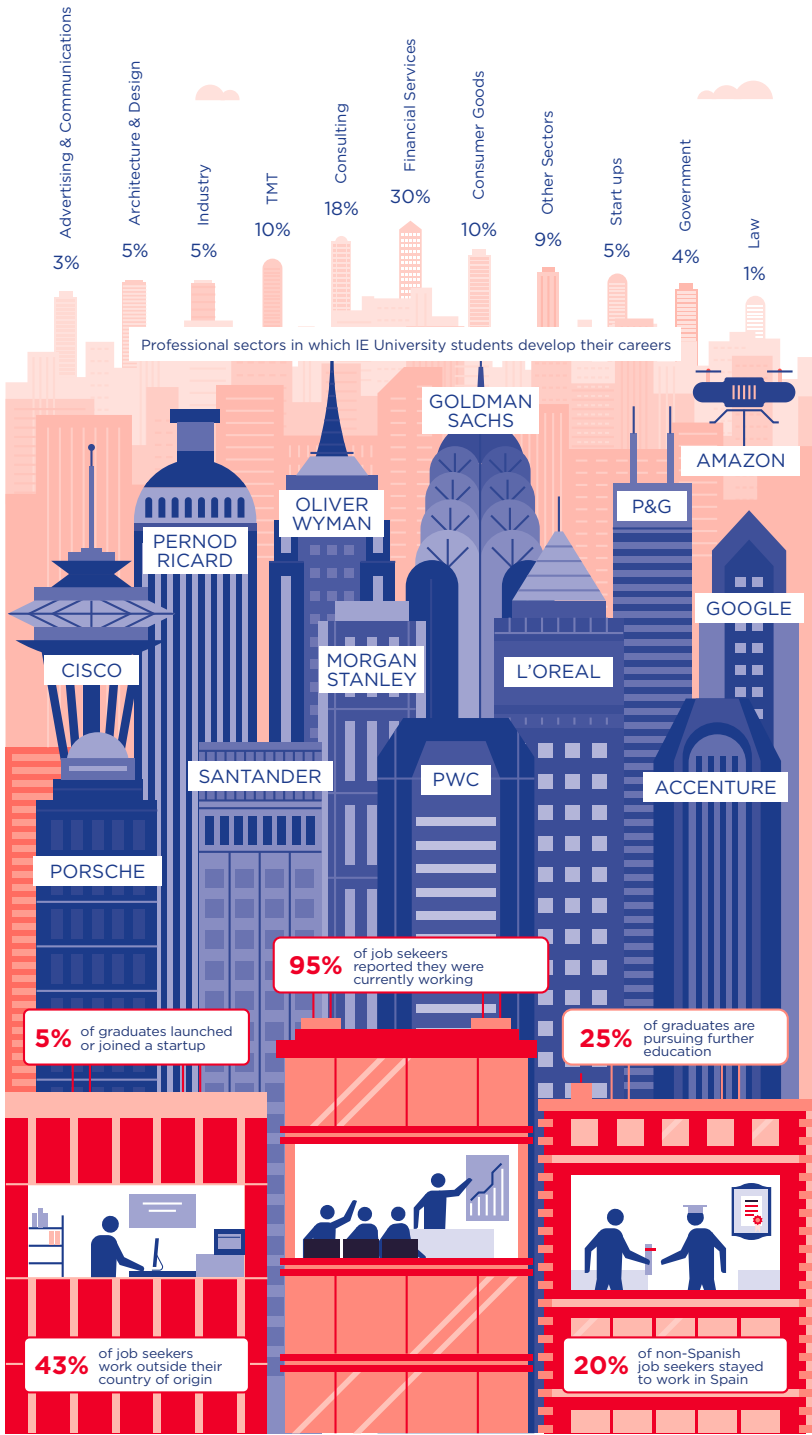
Youth Incorporated  
Global University Rankings 2019

Choosing a career path is one of the most important decisions you will make as you progress through your studies. The IE Career Management Center (CMC) helps graduates launch their careers across industries and around the globe and guides them throughout this decision-making process.

IE University's international recognition and partnerships with leading companies and institutions provide graduates the opportunity to compete for international positions.

IE University students begin to receive employment offers even before they graduate. While many alumni are recruited by major multinational companies, others prefer to join small and medium-sized companies and startups.

Some students choose entrepreneurship as a career choice and start a business while studying at IE University or shortly after graduation, building and managing their own companies.



\* Data reported by IE University's Class of 2018 job seekers.

# ALUMNI

Life after IE University

In order to promote lasting relationships among the members of the IE University community, we offer resources for career development and lifelong learning opportunities, with the objective of propelling personal and professional development of IE University students and alumni.

As an IE graduate, you'll join a global network of more than 45,000 people in over 130 countries.

We organize regular events across the world to help our graduates stay in touch with friends or meet new people. By being part of the alumni community, you will also benefit from career development, social networking, and education opportunities, among others.

[www.ie.edu](http://www.ie.edu)



# ADMISSION PROCESS

Become part of IE University

At IE University, there's no single deadline for applying to our undergraduate programs. The various stages of our admission process are aimed at identifying those areas of your academic and personal profile that make you unique, and to make sure that our educational model is a good fit for you.

As our programs usually fill up far in advance of the start of the academic year, we advise candidates to apply between twelve to nine months before the semester begins. This will also allow you time to obtain any necessary visas or other qualifications. Once you have received an acceptance letter, provisional or definitive, you must make a €2,000 non-refundable deposit to reserve your spot in the bachelor's program of your choice.

1

## ONLINE APPLICATION

The application form contains detailed step-by-step information on how to fill it in, guiding you through the process. Your application is subject to a non-refundable admission fee of €120. It will not be reviewed by the Admissions Committee until submitted and the admission fee has been paid. You can find information on how to pay this fee at the end of the application form. The application may be saved at any time during the process but it must be completed within one month.

## ADMISSION TEST

Take IE University's admission test or international admission tests: the SAT, ACT, CAS, or LNAT. IE University's admission test is conducted solely in English and assesses your verbal, logical and numerical skills. It centers on your ability to reason, rather than knowledge of actual information. This means you don't have to study for the test beforehand to pass it successfully. It also evaluates your English level. You can do the admission test either at the campus in Madrid or Segovia, or at any of the 29 offices IE has around the world. For other cases, please contact our Admissions Department at: [ieuadmissions@ie.edu](mailto:ieuadmissions@ie.edu)

## ONLINE ASSESSMENT

As a tech-forward institution, we use virtual assessment as part of our admissions process. This allows the admissions team to get a sense of your personality and potential before proceeding to a possible interview.

Completing the assessment is simple—you will be given 3 ques-

tions to answer in a set amount of time. One of your responses will be written, and two will be recorded via video. The whole process should only take 20 to 30 minutes to complete.

2

## PERSONAL INTERVIEW

(only after committee review)

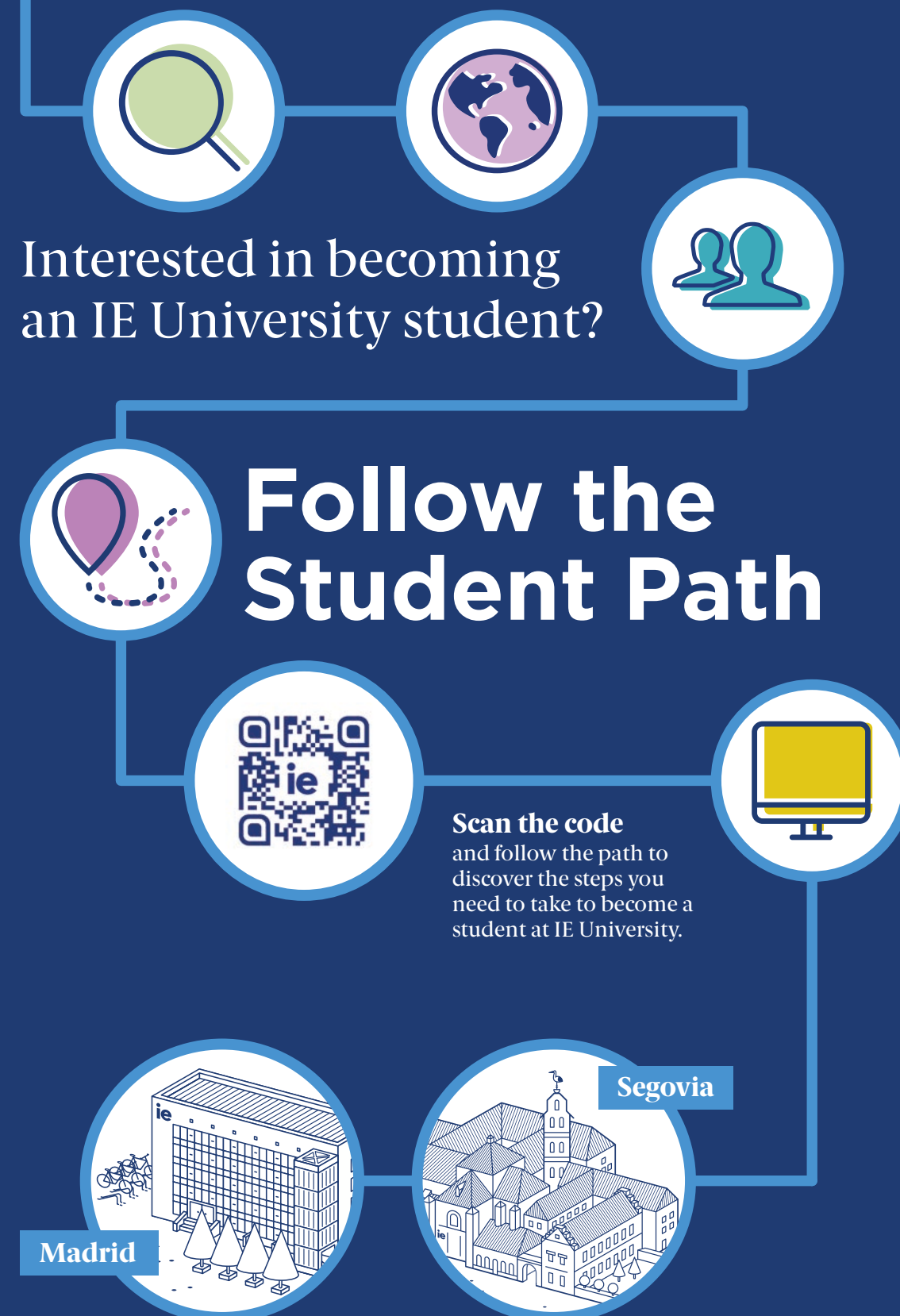
Personal interviews are held either at the IE University campus in Segovia or Madrid, or at any of our 29 international offices. In extenuating circumstances we can arrange an online interview. The interview will allow us to get to know you better, and further assess certain qualities, such as your personality, capacity for critical thinking, method of self expression and other communication skills.

## FINAL COMMITTEE DECISION

You will be informed of the Admissions Committee's decision in writing. If accepted, you will receive one of two admission statuses:

Conditional Admission: in the event that you have failed to comply with all university access requirements in Spain.

Definitive admission: full admission, providing you have complied with all the points listed in the provisional letter of acceptance.







## INTERNATIONAL OFFICES

### EUROPE

[europe@ie.edu](mailto:europe@ie.edu)

#### France – Paris

[france@ie.edu](mailto:france@ie.edu)

#### Germany, Switzerland & Austria – Munich

[dach@ie.edu](mailto:dach@ie.edu)

#### Italy & The Balkans – Milan

[italia@ie.edu](mailto:italia@ie.edu)

#### Portugal – Lisbon

[portugal@ie.edu](mailto:portugal@ie.edu)

#### Spain – Madrid & Segovia

[iespain@ie.edu](mailto:iespain@ie.edu)

#### Turkey – Istanbul

[turkey@ie.edu](mailto:turkey@ie.edu)

#### UK & Ireland – London

[uk@ie.edu](mailto:uk@ie.edu)

### NORTH AMERICA

[northamericaieu@ie.edu](mailto:northamericaieu@ie.edu)

#### West & Midwest USA – Los Angeles

[westcoast@ie.edu](mailto:westcoast@ie.edu)

#### South USA & Caribbean – Miami

[southusa@ie.edu](mailto:southusa@ie.edu)

#### Northeast USA – New York

[northeast@ie.edu](mailto:northeast@ie.edu)

#### Canada – Toronto

[canada@ie.edu](mailto:canada@ie.edu)

### LATIN AMERICA

[latam@ie.edu](mailto:latam@ie.edu)

#### Argentina & Uruguay – Buenos Aires

[argentina@ie.edu](mailto:argentina@ie.edu)

[uruguay@ie.edu](mailto:uruguay@ie.edu)

#### Brazil – Sao Paulo

[brasil@ie.edu](mailto:brasil@ie.edu)

#### Chile – Santiago de Chile

[chile@ie.edu](mailto:chile@ie.edu)

#### Colombia – Bogota

[colombia@ie.edu](mailto:colombia@ie.edu)

[centroamerica@ie.edu](mailto:centroamerica@ie.edu)

#### Ecuador – Quito

[ecuador@ie.edu](mailto:ecuador@ie.edu)

#### Mexico City – Mexico

[mexico@ie.edu](mailto:mexico@ie.edu)

#### Peru, Bolivia & Paraguay – Lima

[peru@ie.edu](mailto:peru@ie.edu)

[bolivia@ie.edu](mailto:bolivia@ie.edu)

[paraguay@ie.edu](mailto:paraguay@ie.edu)

#### Venezuela – Caracas

[venezuela@ie.edu](mailto:venezuela@ie.edu)

### ASIA

[asia-pacific@ie.edu](mailto:asia-pacific@ie.edu)

#### Australia & New Zealand – Sydney

[australia@ie.edu](mailto:australia@ie.edu)

#### China – Shanghai & Beijing

[china@ie.edu](mailto:china@ie.edu)

#### India & South Asia – Mumbai

[india@ie.edu](mailto:india@ie.edu)

#### Japan – Tokyo

[japan@ie.edu](mailto:japan@ie.edu)

#### Singapore & Southeast Asia – Singapore

[singapore@ie.edu](mailto:singapore@ie.edu)

[southeastasia@ie.edu](mailto:southeastasia@ie.edu)

#### South Korea – Seoul

[korea@ie.edu](mailto:korea@ie.edu)

### MIDDLE EAST & AFRICA

[mea@ie.edu](mailto:mea@ie.edu)

#### Saudi Arabia – Riyadh

[saudi@ie.edu](mailto:saudi@ie.edu)

#### UAE, Qatar, Bahrain, Kuwait & Oman – Dubai

[uae@ie.edu](mailto:uae@ie.edu)

#### West Africa – Lagos

[nigeria@ie.edu](mailto:nigeria@ie.edu)

#### Southern Africa – Johannesburg

[southernafrica@ie.edu](mailto:southernafrica@ie.edu)

Please do not hesitate to contact the office nearest to you should you need any additional information. You can also contact us via [iecontact@ie.edu](mailto:iecontact@ie.edu)

[www.ie.edu/offices](http://www.ie.edu/offices)



**[www.ie.edu/university/pple](http://www.ie.edu/university/pple)**

Don't forget to check out our blog:  
**[drivinginnovation.ie.edu](http://drivinginnovation.ie.edu)**

**CONTACT US**

[university@ie.edu](mailto:university@ie.edu)

**CAMPUS IN SEGOVIA**

Cardenal Zúñiga, 12  
40003 Segovia, Spain

T. +34 921 412 410

**CAMPUS IN MADRID**

María de Molina, 31 Bis.  
28006 Madrid, Spain

T. +34 915 689 600

*The information in this brochure is  
subject to revisions or changes. You will  
find the most up-to-date information  
on the IE University's website.*

**FIND US ON**



**@ieuniversity**