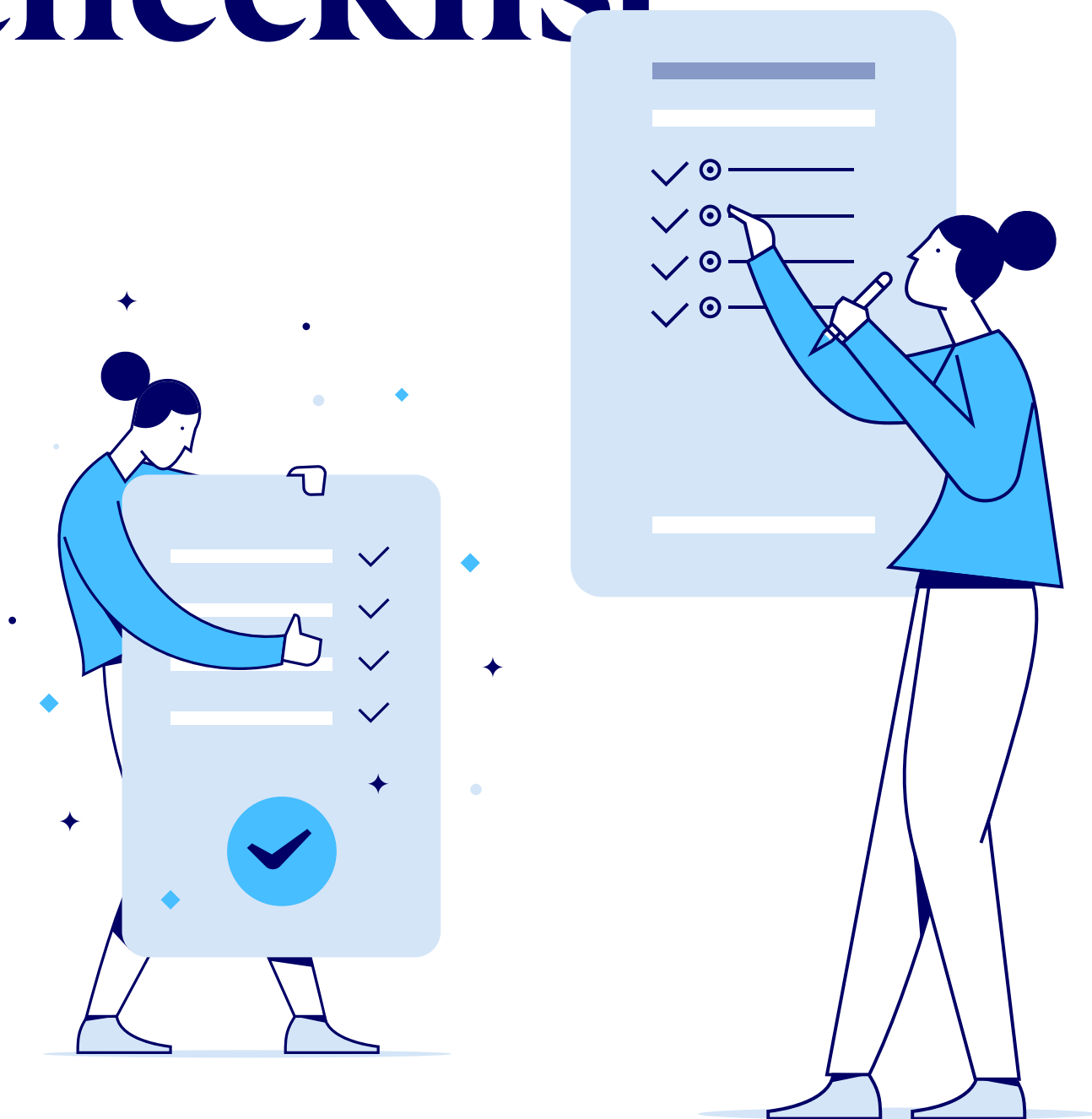


# Admissions process checklist



## ↓ Summary

Complete the online application 

Kira assessment 

Admissions test 

Personal interview 

Final committee decision 

Reserve your place 

Complete the enrollment process after receiving your final grades and diploma 

Payment of the IE Foundation Contribution 

Legalize High School studies 

## ↓ Complete the online application

Fill in your personal information.

Pay the Admissions Fee (€120)

Fill in your educational information.

Attach your CV.

Include additional information about yourself. Write about your hobbies, places you've traveled to and places where you've lived, for example.

Add information about your family, including parents/tutors/guardians where necessary.

If applicable, include information about your volunteering experience, internships and other achievements.

Include a recommendation letter.

It's time to express yourself. Choose one of the questions and answer it in your format of choice, such as video, Prezi, PowerPoint, essay format, etc.

Attach other documents that add value to your application such as diplomas, awards, certificates, etc.

Include a scan of both sides of your valid ID or passport. The expiration date cannot be before the end of the application year in question.

For the admissions test, you can upload your SAT, ACT, LNAT results, or complete IE University's Admissions Test.

Attach a transcript detailing your last two years of study.

Specify your spoken languages and upload any relevant certificates.

**You are now ready to submit your application!**



## ↓ Kira assessment

Complete the Kira assessment, which lasts between 20 and 30 minutes. There are two video questions, which are based on technology and diversity, and one written question, which is based on the humanities.

## ↓ Admissions test

Schedule and take the admissions test in the absence of SAT/ACT/LNAT results.

## ↓ Personal interview

Attend the face-to-face interview.

## ↓ Final committee decision

Wait for the admissions committee's response.

Reserve your place.

Download slack and create your user so you can keep your finger on the pulse of everything that's going on at IE University.

Create your username and password for the IE University platforms, which include the Welcome to IE University page, the student portal and the online campus.



## ↓ Complete the enrollment process after receiving your final grades and diploma

Fill in the contract and sign it. For students under 18, a signature from a parent or legal guardian is mandatory.

Pay the IE Foundation contribution.

Take the language placement test if applicable.

Legalize High School studies.